

WELCOME

FORUM FOR THE FUTURE SUMMIT



Together, we can build a state-of-the-art childcare system

THE GOAL:

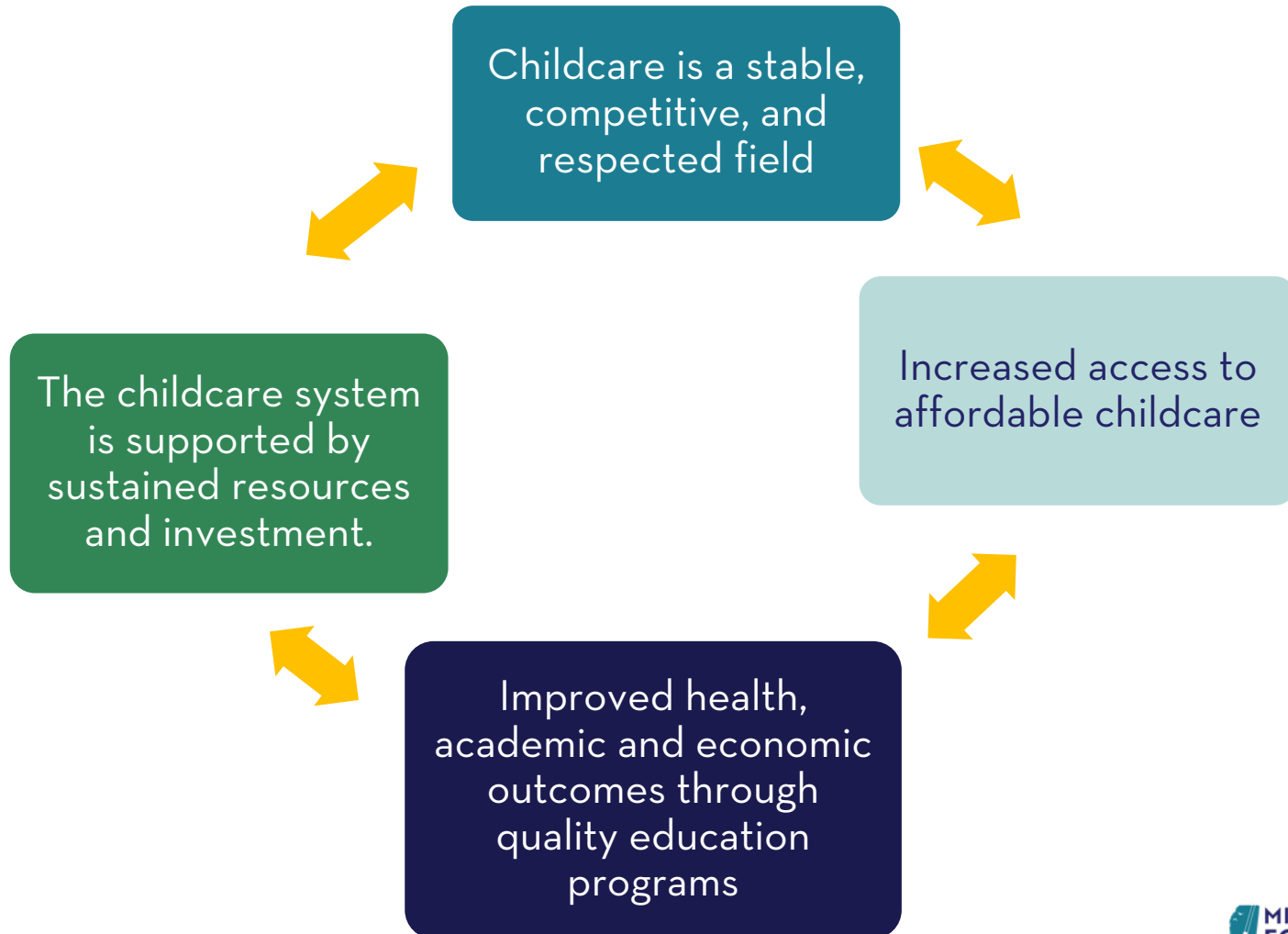
By 2030, Mississippi's childcare system will be **state-of-the-art**, fueled by robust data, resources, and cross-sector collaboration to meet the needs of **all children and families.**

Forum for the Future exists to help us all...

- Break down silos
- Maximize and share resources
- Amplify each others' work toward common goals.
- Elevate the perspectives of childcare providers and parents at the center of our work.
- Speak with one voice on behalf of young children.

Work smarter, not harder

How did we all define State-of-the-Art Childcare?



Childcare is a stable, competitive, and respected field

What's part of this outcome?	How will we know we've succeeded?	What data can we use to prove it?
Mississippi is able to recruit and maintain a robust early care and education workforce in the state	Demand for childcare matches supply	Reduced number or size of <u>childcare deserts</u>
Early care and education professionals receive adequate compensation, benefits, and opportunities for advancement.	There is less of a gap (or no gap) between public school-based preK teacher wages and benefits and childcare teacher wages and benefits.	<ul style="list-style-type: none">• Increase in average hourly and annual wages for childcare workers based on data from the Bureau of Labor Statistics.• Bonuses distributed directly to childcare workers for remaining in their positions.

Families have increased access to affordable childcare

What's part of this outcome?	How will we know we've succeeded?	What data can we use to prove it?
Affordable childcare is available to more families across the state.	There is increased access to Child Care Payment Program subsidies.	<ul style="list-style-type: none">• <u>Supply and Demand In Childcare</u>• <u>Capitalizing on the Capabilities of Child Care Resource and Referral Agencies</u>
Communities experience greater economic security and greater community wellbeing.	Average cost of childcare to families decreases in Mississippi (Ideally 7% of their annual income or less)	The Mississippi Market Rate Survey shows decreases in what families pay for care.

Mississippi sees improved health, academic, and economic outcomes through early education

What's part of this outcome?	How will we know we've succeeded?	What data can we use to prove it?
<p>Approaches to teaching, caregiving, etc. are evidence-based and linked to positive child outcomes.</p>	<ul style="list-style-type: none"> • Percentage increase in average kindergarten readiness • Fewer children need special education services after (1st/2nd/3rd) grade 	<p>Mississippi Department of Education K-readiness Data</p>
<p>Long term positive outcomes for children, including reduced dropout rates, higher graduation rates, fewer suspensions or expulsions, less incarceration, fewer teenage pregnancies.</p>		<p>Part B (IDEA) Enrollment Data</p>
<p>Economic security in communities, greater community well-being.</p>	<p>50% reduction in revenue lost due to childcare gaps OR 50% decrease in job transitions/inability to work due to childcare issues OR Overall improvements in state economy tied to capping families' childcare expenditures.</p>	<ul style="list-style-type: none"> • Data Resource Center for Child and Adolescent Health • Economic Policy Institute

The childcare system is supported by sustained resources and investment.

What's part of this outcome?	How will we know we've succeeded?	What data can we use to prove it?
<ul style="list-style-type: none">Resources are allocated specifically for early childhood. Resources do not come exclusively from larger funding pots that must be repurposed for early childhood.Investments are SUSTAINED (not short-term grants or one-time expenditures) and reflect a strong understanding of the high return produced by early childhood investments.	<p>Growth in combination of federal, state and local funding that is allocated to childcare (ages 0-3) meets</p>	<ul style="list-style-type: none">Increased funding & resources available to support quality improvement in childcare in Mississippi.More funding opportunities available at a local or regional level.

**HOW YOU CAN BE
PART OF THIS**

FULL MEMBERS WILL....

- Publicly show support for Forum for the Future (name & logo on the website)
- Stay informed and engaged: read email updates, participate in meetings, consider joining a working group
- Align your work/your organization's work with the common agenda. Share relevant data, partnership opportunities, and updates about aligned projects with other members.
- Publicize or share Forum announcements, resources & progress with your networks.
- Promote events & initiatives. Share calls for participation in working groups.

FULL MEMBERS RECEIVE...

- Shared funding opportunities
- Invitations to attend or co-host Forum for the Future events, or support with planning or hosting your own aligned events
- Communications support and strategic guidance
- Access to a members-only web portal with data and other resources

Not ready to be a full member?

There are also other ways to be a SUPPORTER of one working group or other FFtF workstream.

We understand that some individuals and organizations may be unable to commit to the full scope of the member agreement, or may need more time or information to decide if full membership is the right fit. If so, we would love to help you remain informed and up-to-date about Forum for the Future progress, activities, and opportunities! We invite you to sign up to receive any or all of the following:

- Enewsletter updates about Forum for the Future
- Invitations to Forum for the Future informational meetings
- Invitations to Forum for the Future's public events and trainings (virtual and in-person)

You or your organization are completely welcome to become a member at any time. If you become a member, you will gain access to all member incentives.

DIVING INTO OUR WORKING GROUPS

WHAT ARE WORKING GROUPS?

- 3-9 month project based task forces aligned to our 4 BIG outcomes that we want to see happen
- Facilitated by co-chairs
- Will require your thinking, experiences, and actions
- May be in-person or virtual or hybrid

What Are Working Groups?

A WORKING GROUP IS

- Short-term
- Time-bound
- Project- & outcome-based
- Aligned to Forum for the Future Common Agenda (target outcomes)
- Collaborative
- A task force to develop and/or implement recommendations and action plans

A WORKING GROUP IS NOT

- Interminable
- Lacking a scope or frame
- A Committee
- Just a space for discussion or conversation
- Only driven by co-chairs

WORKING GROUP 1

Explore Childcare Participation in Early Learning Collaboratives

Co-Chairs:



**Kenecha
Brooks Smith**



**Shuronda
Claiborne-
Common**

Answer Key Questions

- Why aren't more private childcare providers participating in the collaboratives?
- From a childcare provider perspective, what are the advantages or disadvantages of participating in the collaboratives?
- What needs to change, and who can make those changes?

WORKING GROUP 2

Explore funding structures to **provide wage supplements** and professional development directly to **childcare professionals.**

Co-chairs:



**Dr. Cathy
Grace**



**Dr. Connie
Clay**

Answer Key Questions

- What kind of infrastructure would need to be in place to provide higher wages and professional development to childcare workers?
- How much funding would be needed?
- How do health or retirement benefits factor into this equation?
- What would be needed to ensure that funding is sustained?

WORKING GROUP 3

Analyze the **cost of providing quality childcare services across care models & settings**. Determine how to **close the gap between** how much quality services **cost** and how much **families can afford to pay**.

Co-chairs:



Dr. Jeff Leffler **Tamara Smith**

Answer Key Questions

- From a financial and business perspective, what does it take to run a sustainable childcare program (including staffing needs and wages, realistic tuition, supplies, rent/mortgage, etc.).
- How do costs and business needs differ according to center type and setting (i.e. urban vs. rural, home-based vs. center based)?
- What are critical issues within the childcare business model?